



Novel Fracture Solutions

Fracture Stem

Patented anterior-lateral fin aids in anatomic reconstruction/ orientation of the greater and lesser tuberosities.^{42,54}



PHx Proximal Humeral Fracture System

Anatomically contoured plating system treats all types of proximal humeral fractures.

- GT, Anatomic and Victory plate
- Novel Exac-Loc Screw with deployable/retractable talons designed to increase surface area of fixation.

Scapula Reconstruction System

A novel system for scapular fracture fixation designed with the Levy^{3,4} classification in mind.

- Includes pre-contoured plates for orthogonal plating with minimal disruption.
- Each plate includes integral hooks (anterior/lateral/or medial) to support the scapula and counteract the deltoid.⁴⁵



active
INTELLIGENCE

Predict+®

Data-driven, clinical decision support tool that uses machine learning to provide predictions of individual patient outcomes after surgery.²⁰⁻²⁶

Chime

Get and share expertise with surgeons worldwide.



Planning App & Advita GPS™

Shoulder Planning App and GPS Shoulder connect the preoperative plan with real-time intraoperative instrument guidance.

- Better glenoid fixation^{17,18}
- Accuracy within **2 degrees/2mm** of plan^{13, 14, 15}
- **No capital cost**

- Minimum **2-year study**: Improved clinical outcomes, including improved range of motion, reduced postoperative complications, revision rates and adverse events.^{16,19}

Predict+ has not received FDA marketing authorization. Advita GPS is developed by Blue Ortho SAS, an Advita Ortho subsidiary, and distributed by Advita Ortho, LLC. The Equinoxe Shoulder is manufactured by Exactech and distributed by Advita Ortho, LLC. ©2026. 25-0005163 Rev. A 0426



Scan for more information.

advita
ORTHO

Advancing: Life

advita ORTHO
advita.com

equinoxe

PLATFORM
SHOULDER
SYSTEM



Equinox® Platform Shoulder System

Solutions for 100% of shoulder arthroplasty procedures, from straightforward to challenging.

Anatomic & Reverse

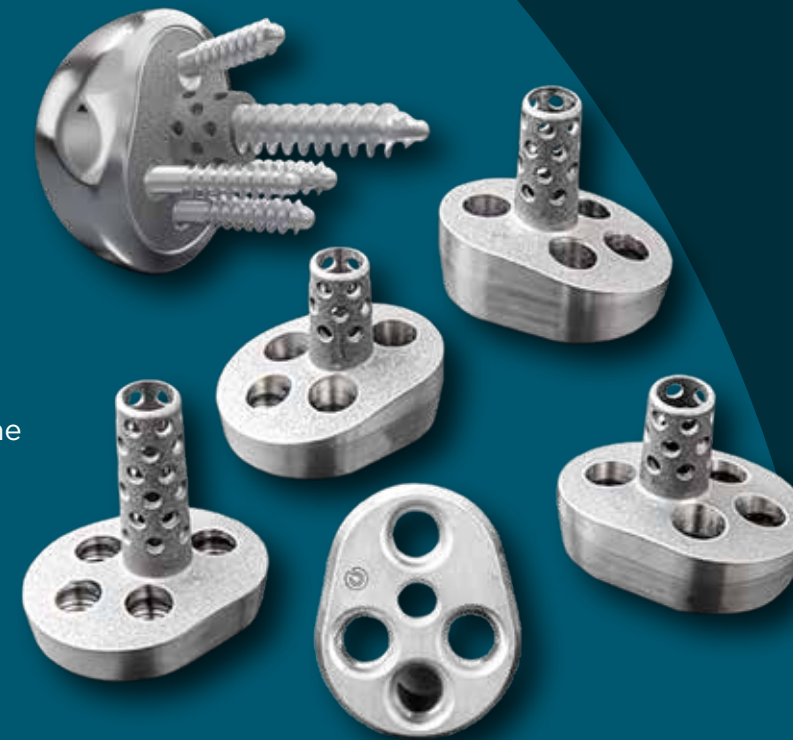
With **20+ years of clinical use**^{1,9,10,27-29,47}, the Equinox platform system replicates a patient's unique anatomy *in situ*⁴⁴. The Equinox system addresses the top complications of aTSA and rTSA through innovative implant design, 3D printed materials and optimized biomechanics.

- One of the most studied shoulders, with **300+ publications**
- 20-year international multicenter research collaboration: **>25,000** patients at 45 clinical sites
- **>93%** patient satisfaction after Equinox aTSA or rTSA^{2,3}
- **>81%** of rTSA patients achieve internal rotation to the sacrum or higher⁴
- Low glenoid loosening rate: **<0.75% after rTSA and 3.3% after aTSA**⁵⁰
- **1-1.4%** instability after rTSA^{6, 50}
- **1.52%** scapular/acromial fracture rate after rTSA^{7,8}



Small Reverse and Central Screw Baseplate

- Small Reverse is designed to treat patients with small glenoid anatomy.³¹
- Both the Central Screw (CS) and Small Reverse Baseplates feature a curved, anatomically shaped design for fit across the range of morphologies.
- CSB: 6.5mm central screw and bone cage are designed to achieve initial fixation and promote bone through-growth.



Preserve Stem

- Bone preserving platform short stem with anti-rotation fins and a plasma coating designed for press-fit fixation
- **0% aTSA and 1.6% rTSA revisions at 2 years**^{30,52,53}

Stemless

Bone preserving humeral prosthesis featuring a 3D-laser-printed porous surface with an optimized pore size, count and porosity designed for biologic fixation^{2,33}



Scan for additional information and clinical references.

Humeral Augmented Tray and Humeral Reconstruction Prosthesis

Novel and first-to-market solutions for proximal humeral bone loss

- The HAT and HRP are designed to maximize deltoid wrap, improving biomechanics and joint stability in the presence of humeral bone loss.
- HRP: Hyper-modular endoprosthesis and novel dual-offset diaphyseal collar system quadrupled torsional resistance and cyclic fatigue life vs. a traditional cemented long stem.⁴⁴
- Minimum **2-year outcomes study (44 patients)**: Significant improvements in range of motion, pain and outcome scores compared to pre-operative scores, with no cases of humeral stem loosening¹²
- **>10x** lower revision and complication rate compared to APC⁵¹



Glenoid Solutions

A wide range of glenoid options to address the most challenging glenoids and bony defects^{5-40,47,48}

- 1st to market with reverse augments and **15+ years of clinical use** with documented positive clinical results²⁷
- The Laser Cage Glenoid is **2X stronger** in shear resistance and **5X stronger** in peg pull-off than the legacy device.
- Demonstrated to withstand **>1000N** in cyclic loading for **20yrs** of simulated use - even when implanted 5mm proud¹¹
- **4x reduction** in radiolucent lines compared to the legacy cage^{34,41}